



Orange Tree Hill, Havering-Atte-Bower, RM4

BUTLER  STAG





**Guide Price £975,000 -  
£1,000,000**

**This stunning five  
bedroom detached family  
home offers versatile and  
spacious living  
throughout.**



## Freehold

- Detached Family Home
- Four/Five Bedrooms
- Three Bathrooms
- Well Presented Throughout
- Secluded Rear Garden
- Parking For Several Cars

On entrance of this stunning detached property, you are greeted by a spacious entrance hall with feature tiles. Leading on to the bright but cosy living room with log burner, the large kitchen area perfect for entertaining or cooking those family meals, followed by the dining/family room, WC and storage area. You will also find one of the five double bedrooms on this floor with en-suite and built in wardrobes/storage.

The second floor comprises of a further four double bedrooms, three of which contain built in storage and one an en-suite. Lastly a newly fitted family bathroom completes the first floor.

Externally, the property offers amicable parking to the front. To the rear, the garden offers the perfect area for spring/summer with the paved area following from the house, leading down the steps to the laid to lawn, pergola, shrubs/topiaries and covered fish pond. Lastly the property offers the added bonus of amicable storage area attached the rear of the property.

Ideally located for all of Havering-Atte-Bowers local amenities. Just 15 minutes to both Harold Wood/Romford station for direct Links to Central London. Good commuter roads for Essex and London areas by way of the A12, A127, M25 and M11. Makes it the ideal location for families and commuters.

Council-Havering  
Tax Band-F









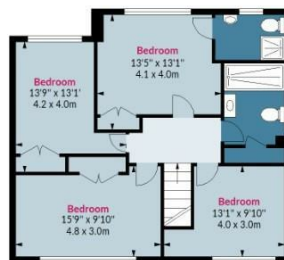
## Orange Tree Hill, RM4

Approx. Gross Internal Area 2028 Sq Ft - 188.40 Sq M  
Approx. Gross Storage Area 84 Sq Ft - 7.80 Sq M

BUTLER & STAG



Ground Floor



First Floor



Measured according to RICS IPMS2. Floor plan is for illustrative purposes only and is not to scale. Every attempt has been made to ensure the accuracy of the floor plan shown, however all measurements, fixtures, fittings and data shown are an approximate interpretation for illustrative purposes only. 1 sq m = 10.76 sq feet.

lpaplus.com

Date: 27/9/2022

IMPORTANT NOTICE - These particulars have been prepared in good faith and they are not intended to constitute part of an offer or contract. We have not performed a structural survey on this property and the services, appliances and specific fittings have not been tested. All photographs, measurements, floor plans and distances referred to are given as a guide and should not be relied upon.

BUTLER & STAG

☎ 01992 667666

🏠 4 Forest Drive, Theydon Bois, Essex, CM16 7EY

✉ theydon@butlerandstag.com

www.butlerandstag.uk